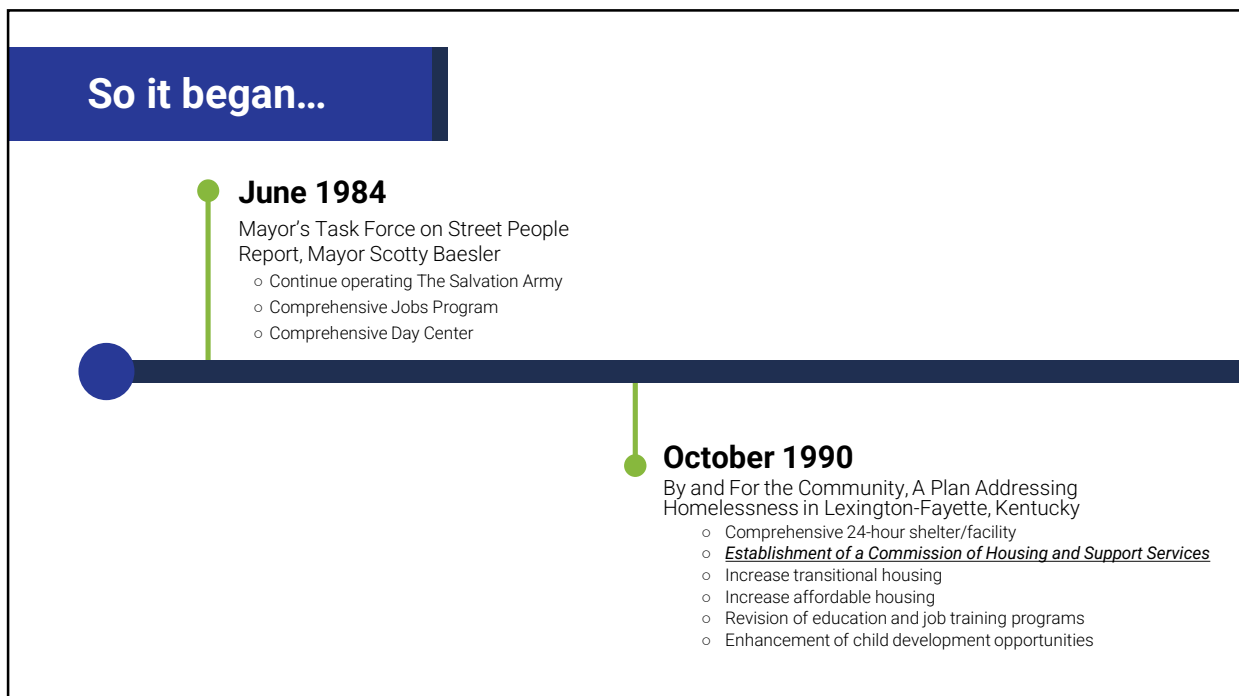


The slide features a dark blue background on the left side with the 'LEX END HOMELESSNESS' logo, which includes a stylized house icon and the tagline 'Unlocking Housing for All'. Below the logo, the text 'KLC Homelessness Summit' is written in large white font, followed by 'Strategies' in a smaller white font. A horizontal green line is positioned below 'Strategies', and the date 'November 9, 2021' is at the bottom left. On the right side, there is a photograph of a stone building with a large 'LEX' sign in front, with 'LEXINGTON, KENTUCKY' written below it.

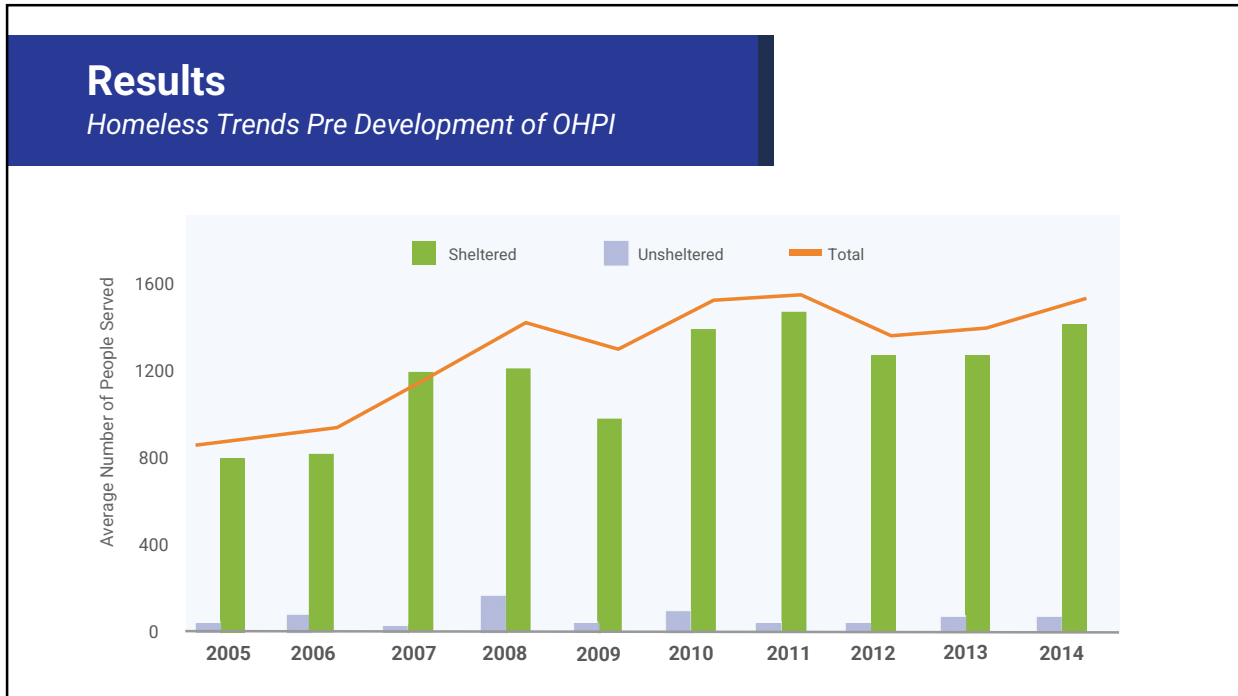
1



The slide is titled 'So it began...' in a dark blue header. It features a horizontal timeline with a blue circle on the left and a green circle on the right. Two key events are listed:

- June 1984**
Mayor's Task Force on Street People Report, Mayor Scotty Baesler
 - o Continue operating The Salvation Army
 - o Comprehensive Jobs Program
 - o Comprehensive Day Center
- October 1990**
By and For the Community, A Plan Addressing Homelessness in Lexington-Fayette, Kentucky
 - o Comprehensive 24-hour shelter/facility
 - o Establishment of a Commission of Housing and Support Services
 - o Increase transitional housing
 - o Increase affordable housing
 - o Revision of education and job training programs
 - o Enhancement of child development opportunities

2



3


And it continued...

January 2013
for the Greater Good, Mayor Jim Gray

- Funding
- Structure
- Facilities
- Services
- Policy Changes
- Further Study

- Homeless Representative x2
- Hope Center Emergency Shelter for Men
- Hope Center Recovery Program for Women
- Lexington Housing Authority
- East End Resident
- Lexington Division of Police
- Eastern State Hospital
- Community Volunteer x4
- Bluegrass Domestic Violence Program
- United Way of the Bluegrass
- Calvary Baptist Church
- New Beginnings Bluegrass, Inc.
- Lexington Public Library Board of Trustees
- Sheriff
- Office of the Mayor
- Steve Kay, Vice Mayor
- UK College of Social Work, Dean
- First Presbyterian Church
- UK Office of the Provost, Financial Model Implementation
- Chaplain
- Fayette County Public Schools Student Support Services
- Central Kentucky Housing and Homeless Initiative
- Volunteers of America
- LexTran
- Bethel Hispanic Church
- Business Owner and Downtown Resident
- Legal Aid of the Bluegrass
- VA Medical Center
- St. James Place
- KY Department of Advocacy

4

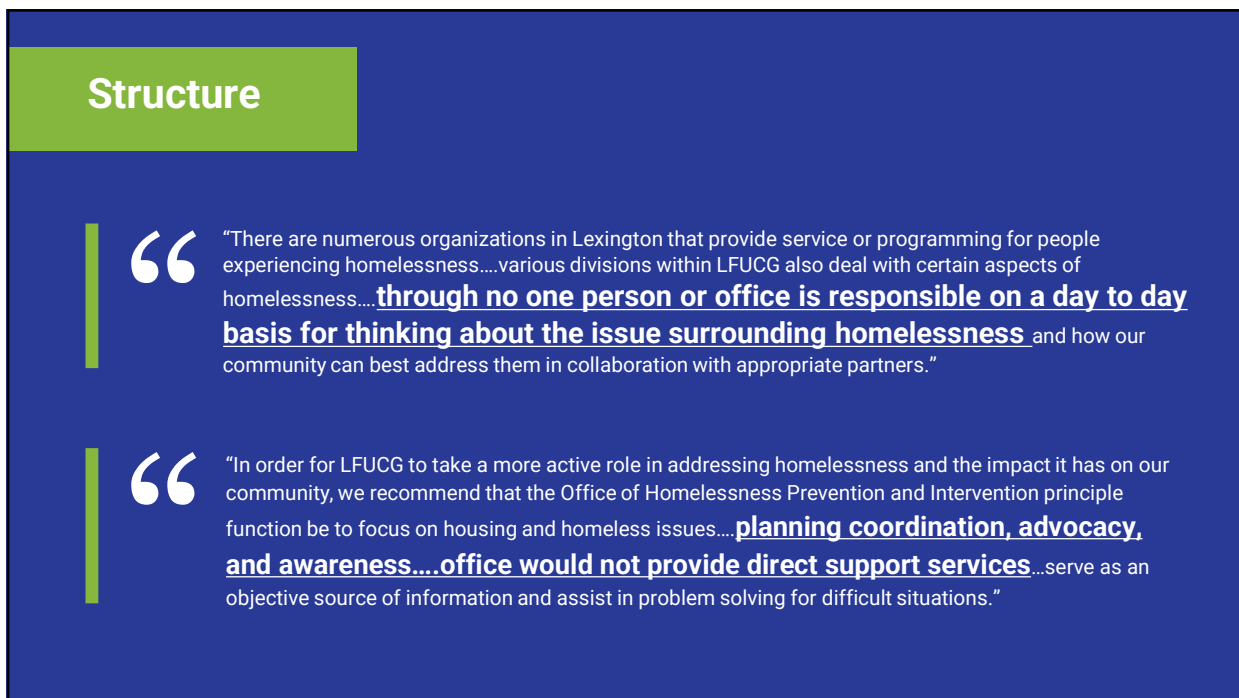



Structure

January 2013
for the Greater Good, Mayor Jim Gray

- Funding
- **Structure**
- Facilities
- Services
- Policy Changes
- Further Study

5

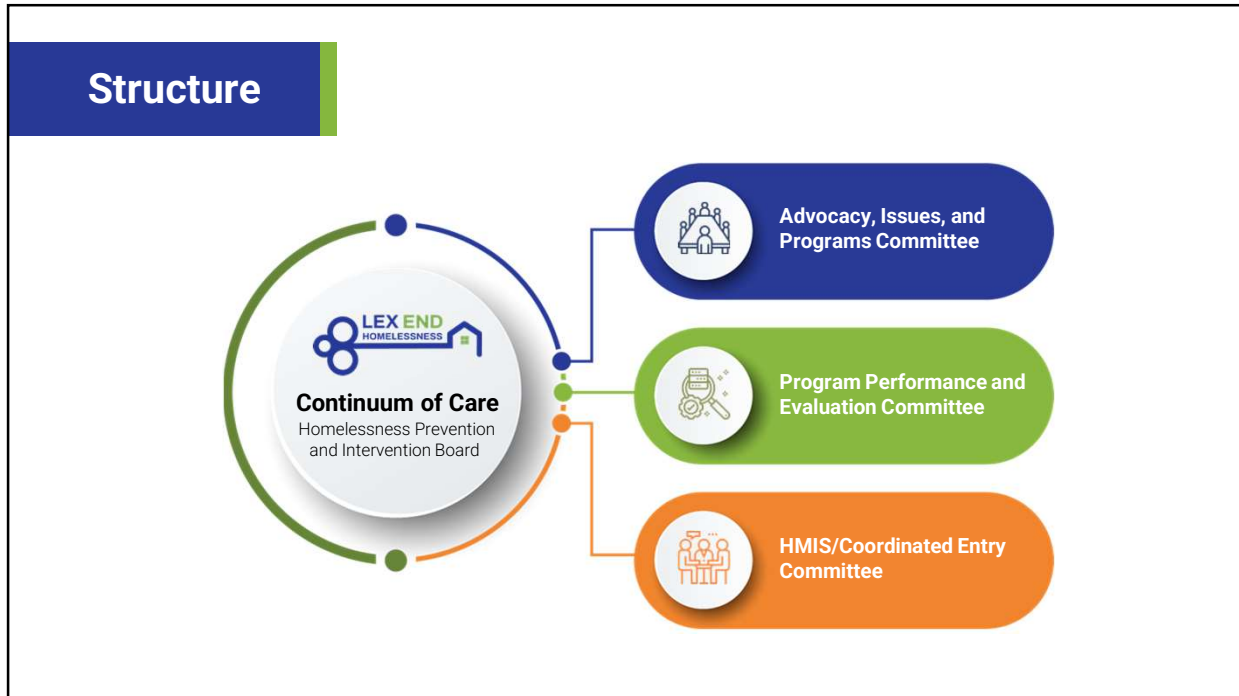


Structure

“There are numerous organizations in Lexington that provide service or programming for people experiencing homelessness....various divisions within LFUCG also deal with certain aspects of homelessness....**through no one person or office is responsible on a day to day basis for thinking about the issue surrounding homelessness** and how our community can best address them in collaboration with appropriate partners.”

“In order for LFUCG to take a more active role in addressing homelessness and the impact it has on our community, we recommend that the Office of Homelessness Prevention and Intervention principle function be to focus on housing and homeless issues....**planning coordination, advocacy, and awareness....office would not provide direct support services**...serve as an objective source of information and assist in problem solving for difficult situations.”

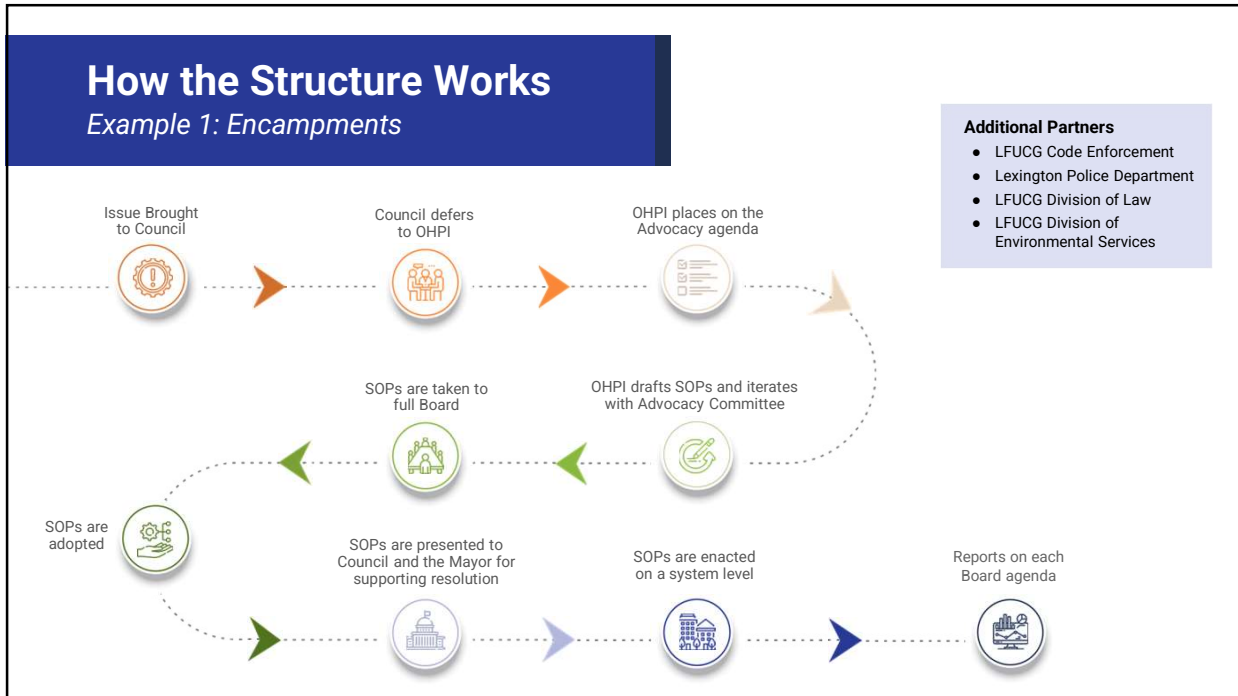
6



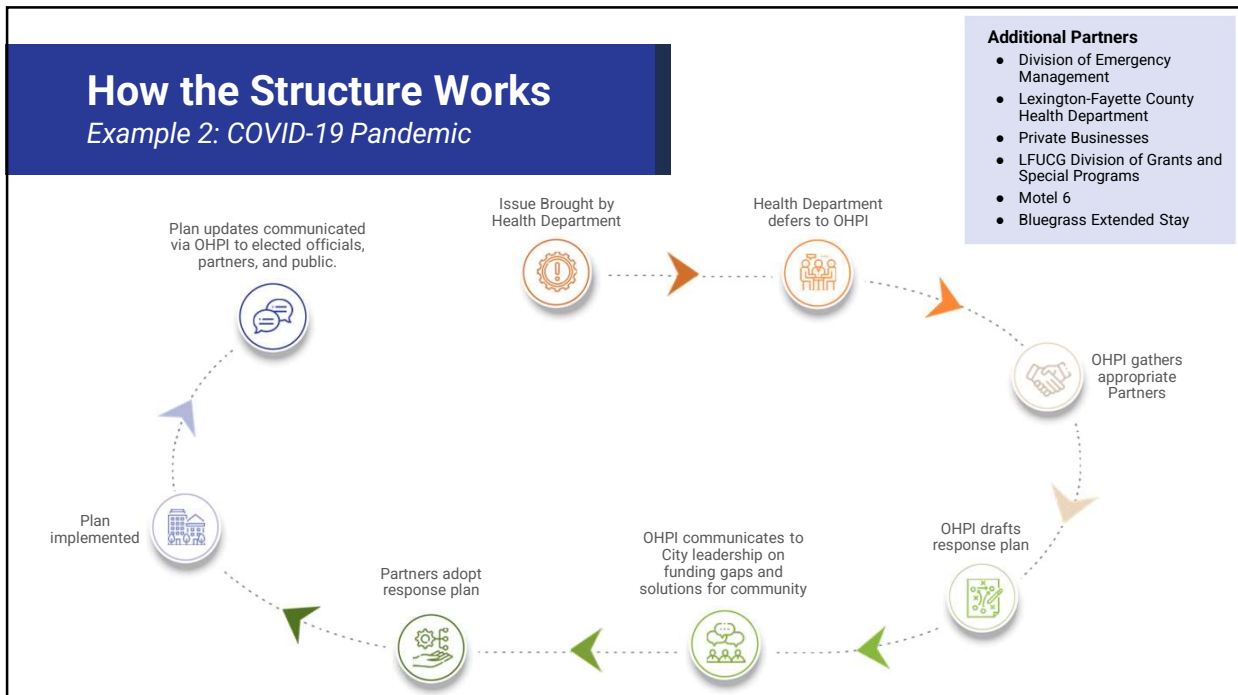
9



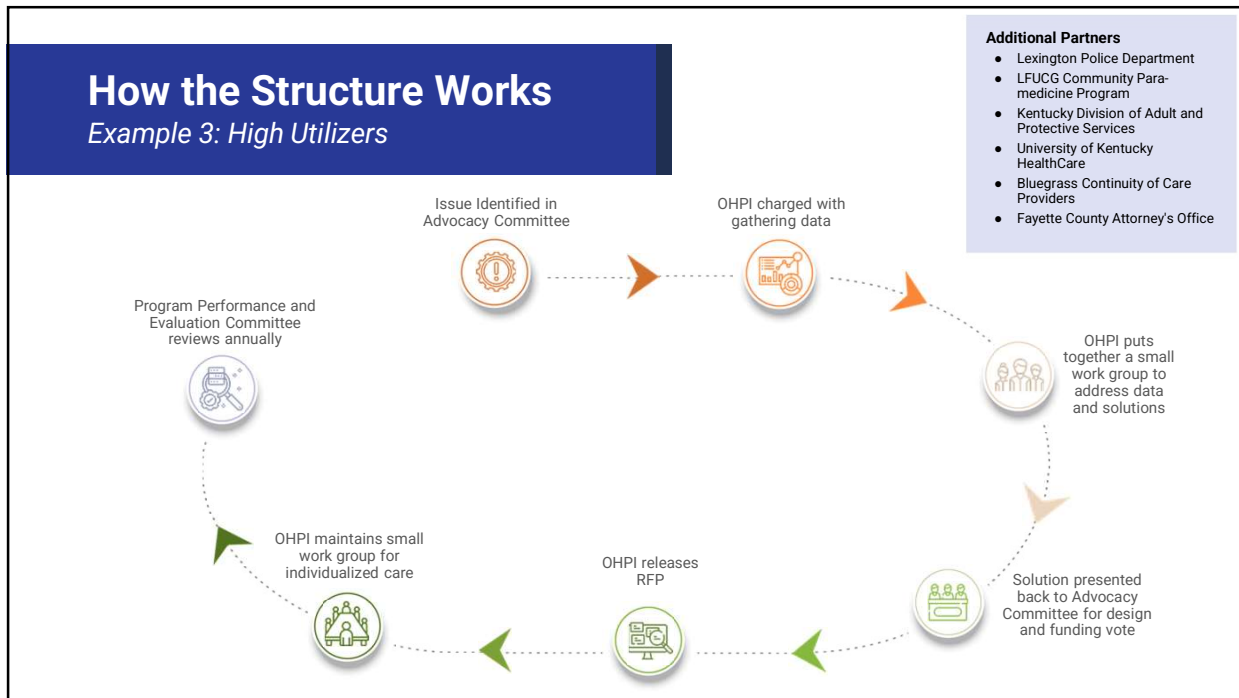
10



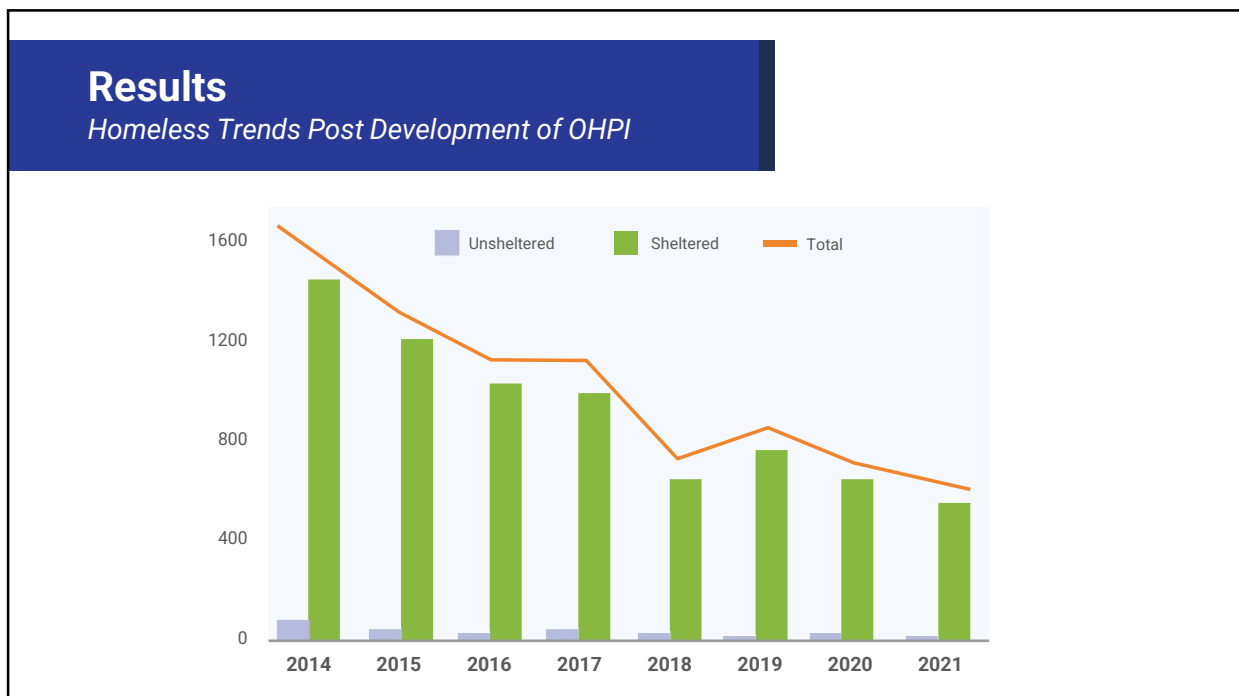
11




12



13





14




Contact

Polly Ruddick
Director, Office of Homelessness
Prevention and Intervention

 859.258.3105


 pruddick@lexingtonky.gov

 <http://lexendhomelessness.com/>

15

Providing quality behavioral
health care that offers


Recovery & Hope



Presenter:
Jackie Long
Director of
Housing and
Grants

Homelessness Prevention and Strategies for small cities and communities

Mountain Comprehensive Care Center
606-886-8572 | www.mtcomp.org



16

Building on lessons from larger jurisdictions

-  Review Available Resources
-  Identify people and/or organizations who can provide services
-  Identify people and/or organizations who encounter homeless persons on a regular basis

17

What Resources are Available

- Balance of State Continuum of Care
 - Permanent Supportive Housing
 - Rapid Rehousing
 - Street Outreach
- Emergency Solutions Grant
- HOME Tenant Based Rental Assistance
- ARPA funds (up to the local decision makers)
- Private Foundation Grants



18



19



20

KEYS TO SUCCESS

- Coordination
- Collaboration
- Partnerships



21

Now What?



Mountain Comprehensive Care Center
606-886-8572 | www.mtcomp.org



22

Identify the Root Causes

- Mental Illness
- Drug use/abuse
- Lack of jobs
- Exits from Jails
- Lack of affordable housing
- Lack of emergency shelter
- Ask the question: Does our community see more first time homeless or chronically homeless?

23

Action Steps for Cities

- Internally, determine the city's issues/needs surrounding homelessness.
- Designate a lead person for the response to homelessness.
- Determine what resources, if any, the city can designate for homelessness response.
- Invite community stakeholders to participate in discussions.
- Encourage collaboration among stakeholders, including city government.
- Participate in the KCount.

24



Providing quality behavioral health care that offers

Recovery & Hope



Jacqueline S. Long
Director of Housing and Grants
859-227-7755
Jackie.long@mtcomp.org

Mountain Comprehensive Care Center
606-886-8572 | www.mtcomp.org